



CERTIFICATE OF QUALITY ASSURANCE

PRODUCT NAME: Full Spectrum K9 Soft Chews - Beef Flavor

PRODUCT CODE: SC-2mg-2000-BU

FULFILLMENT LOT NUMBER: AC031518SC1 (Sales Order# CUNA-001-SN-G, (2) 10 lb bags, 1,000 soft chews per bag)

BATCH NUMBER: 2286227

DATE OF MANUFACTURE: 03/15/2018

Expiration date is 24 months under sealed conditions.

ACTIVE INGREDIENTS: THC-Free Phytocannabinoid-Rich Hemp Oil

INACTIVE INGREDIENTS: Water, dried brewer's yeast, glycerin, gum arabic, sodium alginate, beef liver powder, natural bacon flavor, flaxseed oil, microcrystalline cellulose, organic sweet potato powder, sunflower lecithin (non-GMO), citrus pectin, dextrin, vitamin E, sodium propionate, calcium sulfate dihydrate, polysorbate, natural mixed tocopherols (natural preservative)

Attributes	Acceptance Criteria	Results	Test Method
Appearance	Soft solid cylinders	Conforms	QCU002 or QAU005
Odor	Characteristic	Conforms	QCU002 or QAU005
Color	Dark Brown with beige specs	Conforms	QCU002 or QAU005
Cannabinoid Content	1.9-2.1 mg Phytocannabinoids per chew THC Not Detected	2 mg Phytocannabinoids per chew THC Not Detected	QCU001 or QAU005

Package	Acceptance Criteria	Results
Primary Package	Container dedusted and wiped clean. Container caps screwed on tight.	Conforms
Secondary Package	Carton Sturdy and clean. Sufficient cushion material exists. Carton taped on all sides	Conforms



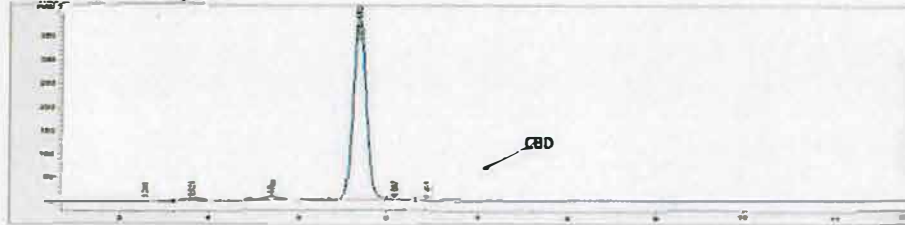
CURRENT NATURALS

TEST ID: 010818KM DATE: 1/9/2018
 Extracted Chew LOT No.: 2286227
 TYPE: Phytocannabinoid Canine Beef Hemp Bulk Soft Chews

POTENCY RESULTS

	Wt. (%)	(mg/g)	(mg/ treat)
CBD	0.06	0.56	2.69
CBG	ND	ND	ND
CBN	ND	ND	ND
THC	ND	ND	ND
CBC	ND	ND	ND
THC-A	ND	ND	ND
CBD-A	ND	ND	ND
MAX THC	ND	ND	ND
MAX CBD	0.06	0.56	2.69
TOTAL ACTIVE	0.06	0.56	2.69

Full-View Chromatogram



Magnified Chromatogram



VISUAL INSPECTION

Dark Brown Chew

TEST ID: 010818KM DATE: 1/9/2018
 Extracted Chew LOT No.: 2286227
 TYPE: Phytocannabinoid Canine Beef Hemp Bulk Soft Chews

TERPENES RESULTS

	Wt. (%)		Wt. (%)
β-Bisabolene	< 0.1	Camphene	< 0.1
β-Farnesene	< 0.1	E-Farnesene	< 0.1
Guaiol	< 0.1	Farnesol	< 0.1
β-Maallene	< 0.1	α-Bisabolol	< 0.1
Calarene	< 0.1	P-Cymene	< 0.1
β-Caryophyllene	< 0.1	Linalool	< 0.1
α-Humulene	< 0.1	Myrcene	< 0.1
Cadinene	< 0.1	Phytol	< 0.1
α-Gurjunene	< 0.1	Isopulegol	< 0.1
d-Limonene	< 0.1	Terpinene	< 0.1

Nerolidol	< 0.1	Geraniol	< 0.1
α-Pinene	< 0.1	Myrcene	< 0.1
Aristoiene	< 0.1	γ-Terpinene	< 0.1
Eucalyptol	< 0.1	δ-3-Carene	< 0.1

RESIDUAL SOLVENTS RESULTS

Propane	Not Detected	Pentane	Not Detected
Isobutane	Not Detected	Isopropanol	Not Detected
Butane	Not Detected	Hexane	Not Detected
Ethanol	Not Detected	Acetone	Not Detected

PESTICIDES RESULTS

Acequinocyl	Not Detected	Spinosad	Not Detected
Pyrethrum	Not Detected	Spirotetramat	Not Detected
Spiromesifen	Not Detected	Bifenazate	Not Detected
Abamectin	Not Detected	Fenoxycarb	Not Detected
Imidacloprid	Not Detected	Paclobutrazol	Not Detected

HEAVY METALS

Cadmium	Not Detected
Lead	Not Detected
Arsenic	Not Detected
Mercury	Not Detected



TEST ID: 010818KM DATE: 1/9/2018
 Extracted Chew LOT No.: 2286227
 TYPE: Phytocannabinoid Canine Beef Hemp Bulk Soft Chews

POTENCY RESULTS

	Wt. (%)	(mg/g)	(mg/ treat)
CBD	0.06	0.56	2.69
CBG	ND	ND	ND
CBN	ND	ND	ND
THC	ND	ND	ND
CBC	ND	ND	ND
THC-A	ND	ND	ND
CBD-A	ND	ND	ND
MAX THC	ND	ND	ND
MAX CBD	0.06	0.56	2.69
TOTAL ACTIVE	0.06	0.56	2.69

TEST ID: 010818KM DATE: 1/9/2018
 Extracted Chew LOT No.: 2286227
 TYPE: Phytocannabinoid Canine Beef Hemp Bulk Soft Chews

TERPENES RESULTS

	Wt. (%)	Wt. (%)
β-Bisabolene	<0.1	Camphene
β-Farnesene	<0.1	E-Farnesene
Guaiol	<0.1	Farnesol
β-Maaliene	<0.1	α-Bisabolol
Calarene	<0.1	P-Cymene
β-Caryophyllene	<0.1	Linalool
α-Humulene	<0.1	Myrcene
Camphene	<0.1	Phytol
α-Gurjunene	<0.1	Isopulegol
d-Limonene	<0.1	Terpinene



VISUAL INSPECTION

Dark Brown Chew

Nerolidol	<0.1	Geraniol	<0.1
α-Pinene	<0.1	Myrcene	<0.1
Aristolene	<0.1	γ-Terpinene	<0.1
Eucalyptol	<0.1	δ-3-Carene	<0.1

RESIDUAL SOLVENTS RESULTS

Propane	Not Detected	Pentane	Not Detected
Isobutane	Not Detected	Isopropanol	Not Detected
Butane	Not Detected	Hexane	Not Detected
Ethanol	Not Detected	Acetone	Not Detected

PESTICIDES RESULTS

Acequinocyl	Not Detected	Spinosad	Not Detected
Pyrethrum	Not Detected	Spirotetramat	Not Detected
Spiromesifen	Not Detected	Bifenazate	Not Detected
Abamectin	Not Detected	Fenoxycarb	Not Detected
Imidacloprid	Not Detected	Paclitaxel	Not Detected

HEAVY METALS

Cadmium	Not Detected
Lead	Not Detected
Arsenic	Not Detected
Mercury	Not Detected